

COOKE

CONTEMPORARY FURNITURE

888-303-2453 | info@cookefurniture.com

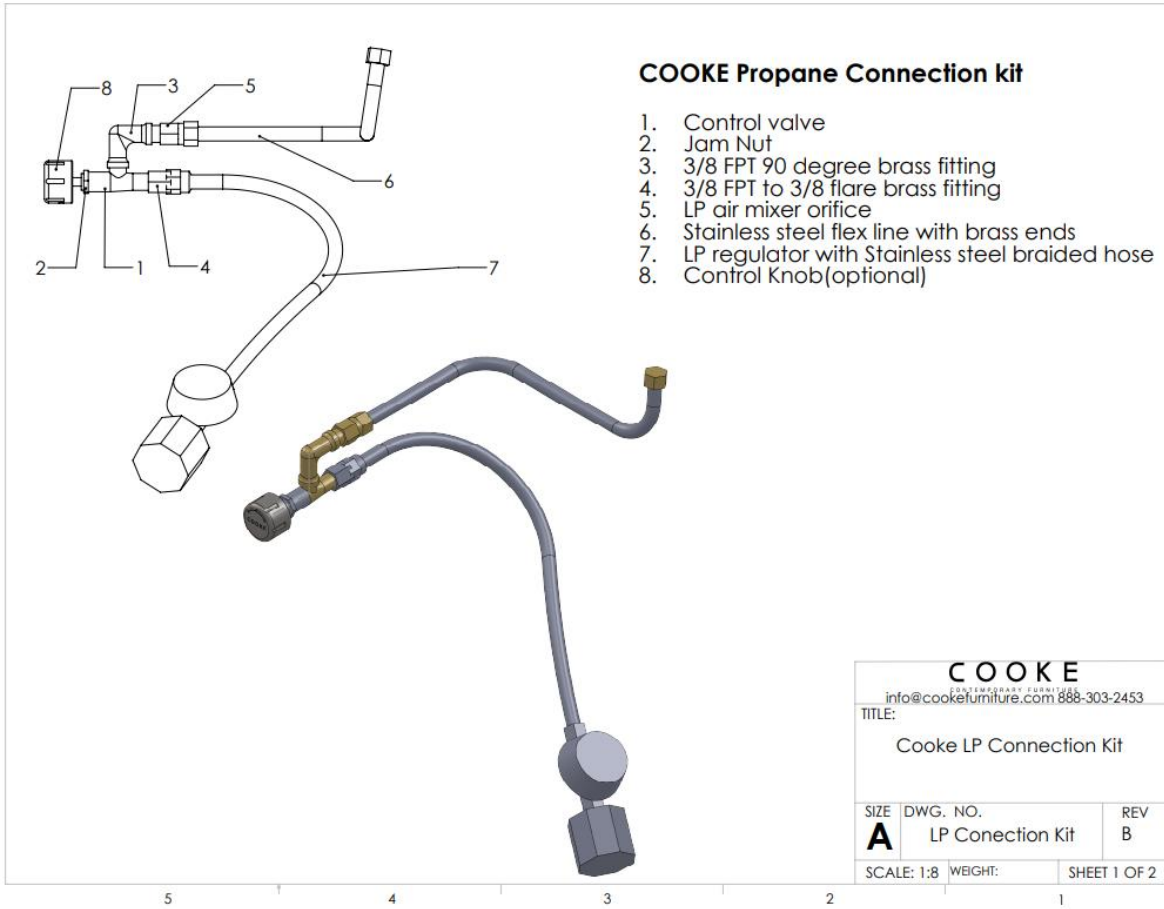
Trouble Shooting low flames on propane fire pit that previously had larger flames

1. Make sure you have a full propane tank and it is in the correct position (vertical tanks cannot be horizontal and horizontal tanks cannot be vertical) Horizontal tank must be in the correct rotation resting on the feet of the tank.
2. Make sure the regulator is fully connected
3. Make sure the tank valve is turned on all the way
4. Sometimes the regulator can get stuck. Turn off the tank disconnect the regulator and then reconnect with the fire pit valve off slowly turn the tank on and they turn on the fire pit.



It is common that low flame height is caused by an obstruction between the valve and the burner. One of the most common obstructions is caused by a spider who makes a web in the air mixer fitting the next most common obstruction is water that got trapped in the flex line.

See below take the flex line off the valve and look in the air mixer and make sure there is not a spider web or debris then blow on the flex line and make sure there is no water in it and it is free flowing. Then reassemble and test. If





If there is no obstructions and the flames are still low then replace the regulator or the entire connection kit.

Go to below links to purchase.

<https://www.socalfirepits.com/parts-and-accessories/valves-and-controls? bc fsnf=1&brand=160>